



# Violence Data Brief

## Sexual Violence 2002 to 2007

Sexual violence (SV) has profound immediate and long-term consequences on physical and mental health; it affects both victims and perpetrators (1). In Minnesota, SV is most common among females, young adults under age 30, and urban residents. This report provides the most current data describing SV in Minnesota from 2002 to 2007, updating a report for 1999 to 2001 (2). It includes information from hospital data, community survey responses, and police crime reports. Each of these sources defines SV differently; thus data analysis is complex. It is important to consider each data source individually because victims differentially seek medical care, report to law enforcement, or respond to surveys. **Because of differing definitions and responses, data from one source cannot be directly compared to another. However, when viewed together, the data may offer important insight in understanding SV in Minnesota.**

Analysis of the hospital data showed an average increase of 6% per year in the age-adjusted rate between 2002 and 2007. Each of those years, there was an average increase of 68 cases of Minnesotans receiving hospital care due to SV.

In general, data from community surveys (self-report survey data are considered among the most reliable indicators of SV) showed a decline in the percentage of respondents who reported sexual victimization. The Minnesota Student Survey and the Minnesota Crime Survey, respectively, showed self-reports of SV declining from 8.9% to 6.0% and from 1.6% to 0.4% (rape/attempted rape) from early 1990s to 2007. Reports to law enforcement agencies showed SV has remained relatively constant at an average of

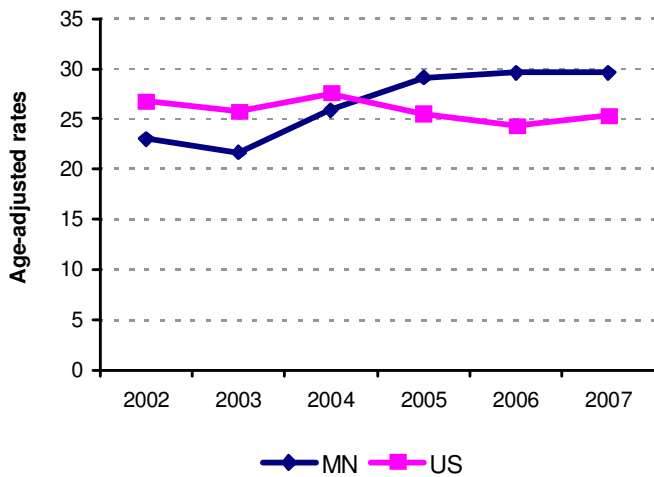
125 events per 100,000 population (crude rate) between 2002 and 2007.

Together, these data may suggest that (1) SV may be decreasing in Minnesota and that (2) the increase in the number of Minnesotans receiving hospital care for SV may be due to better reporting by hospitals or to people being willing to go to the hospital following a sexual assault (Figure 1). On the other hand, because of the differences in reporting and defining SV by these multiple contact points, it is difficult to conclusively explain the increase in the number of Minnesotans receiving hospital care for SV between 2002 and 2007.

### In this data brief:

- Hospital care in Minnesota due to SV: patient demographics; patient injuries; charges, costs and payers (p.2)
- Self-reported SV from Minnesota surveys: Minnesota Student Surveys and Minnesota Crime Surveys (p.7)
- Criminal justice SV data: reported crimes to law enforcement agencies and arrests (p.7)
- Resources and Assistance (p.8)
- Data sources and methodology (p.8)
- References (p.9)
- Suggested citation (p.9)

National and Minnesota SV Hospital Data, 2002-2007



**Figure 1:** Age-adjusted rates are reported per 100,000 population. Minnesota age-adjusted rates for hospital-treated SV surpassed the national rates in 2005 and have remained somewhat steady since. These data may indicate better improvement in hospital services utilization in Minnesota compared to the nation or that Minnesota SV rates are higher than national rates.

### Hospital care due to SV

Hospital-treated SV is defined as any completed or attempted sex act in which a victim was forced against her or his will, or was unable to consent; it includes contact and non-contact sexual abuse. Hospital data appear to represent a small percentage of all SV incidents in Minnesota; they are perhaps most useful for the detail they provide about victims, circumstances, and health care costs. Hospital data in this report are from hospital-assigned billing codes, which include known SV cases.

In 2007, at least 1,518 Minnesotans received hospital care for SV, an age-adjusted rate of 29.6 per 100,000 population. This is an increase of 29% from the age-adjusted rate of 23.0 per 100,000 population of hospital care received for SV in 2002. In fact, since 2002 the age-adjusted rate of hospital care due to SV has climbed 6% every year. The age-adjusted rate per 100,000 population of hospital-treated SV was 23.0 in 2002, 21.7 in 2003, 25.9 in 2004, 29.1 in 2005, and 29.6 in 2006 and 2007.

The cause of the increase is not clear: one reason may be better reporting by hospitals; another reason may be that stigmatization from SV is decreasing in Minnesota and more people are coming to the hospital; yet a third reason may be that SV events are increasing above and beyond better reporting and SV destigmatization. Rates for hospital-treated SV are much lower than rates of reports to law enforcement agencies, suggesting that most people are not receiving hospital treatment when victimized (Table 1).<sup>1</sup>

### Patient demographics

**Gender.** The vast majority (93 to 94%) of patients who received hospital care due to SV between 2002 and 2007 were females. Their age-adjusted rate per 100,000 population increased from 43.4 in 2002, 41.4 in 2003, 49.5 in 2004, and, 55.7 in 2005 to 56.4 in 2006. The rate dropped slightly to 56.1 in 2007. The rate of male hospital patients ranged from 2.7 to 4.1 per 100,000 population during the same six years.

**Age.** The age of SV patients ranged from less than age one to more than 100. In 2007, 76 percent of female patients and 61 percent of male patients were under age 30 (Figure 2). During the six years, Minnesotans age 40 years and younger accounted for between 87% and 92% of patients who received hospital care due to SV. 45-55 % of patients were under age 20 years; 77-80% were under 30 years; and nearly all, 96-98 %, were age 49 years and younger.

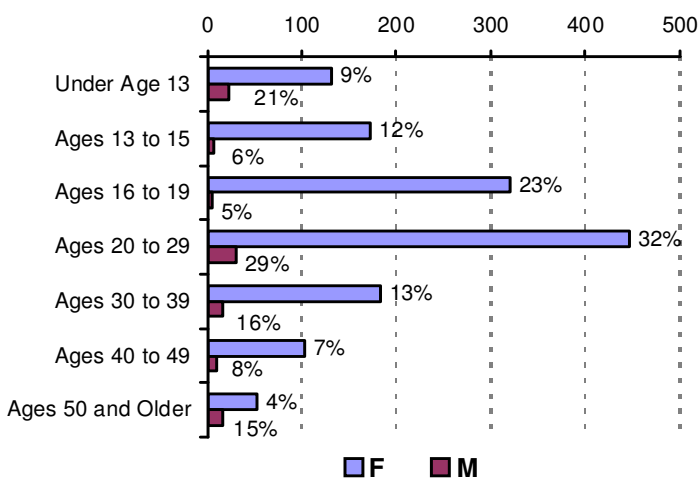
**Geography.** SV victimization is greater in urban areas. Urban areas had rates up to three times higher than rural areas for hospital-treated SV between 2002 and 2007.<sup>2</sup> Rates per 100,000 population in urban areas increased from 47.4 in 2002, 40.1 in 2003, 50.2 in 2004, 54.1 in 2005, and 53.4 in 2006 to 53.8 in 2007. Rates in rural

<sup>1</sup> SV-related reported crimes and patients hospital-treated for SV are not directly comparable. Low county rates may be attributed to recording procedures by hospitals and law enforcement and may not represent the actual number of hospital cases reported or reported crimes.

<sup>2</sup> Rates exclude hospital-treated patients with unknown county and zip code of residence and are based on females hospital-treated for SV because counts for males treated for SV are statistically insignificant at county level.

areas ranged between 18.1 and 24.4 per 100,000 population during the same period. The cause of the disparity in the rates for hospital-treated SV between urban and rural areas is not clear but may indicate that (1) SV is underreported in rural counties or (2) SV is more prevalent in urban areas.

**Hospital-treated SV by Age and Gender,  
Minnesota, 2007 (N=1,518)**



**Figure 2:** Hospital data shows more than 50% of females and males were treated for SV in 2007.

**Patient injuries**

Between 2002 and 2007, almost 98% of SV patients were treated in and released from the emergency department (ED); the remainder of patients sustained injuries that required an overnight stay (inpatient treatment) of one or more days at the hospital. Generally, inpatient treated injuries were more severe than those treated in the ED. Brain injuries are among the most disabling injuries associated with SV events. Between 2002 and 2007, a total of 31 SV patients had diagnosed traumatic brain injuries, the most severe form of head injuries. Of the SV patients diagnosed with traumatic brain injuries, 3.24% received inpatient treatment while 0.3% were treated and released from the emergency department (ED).

**Charges, costs, and payers**

Charges. Charges represent the amount billed for hospital services rendered. Hospital reimbursement is often less than the original charges because of contracts between payer providers and hospitals. All amounts are presented in 2007 dollars (3). Inpatient charges appear smaller than outpatient charges because fewer SV patients were admitted to the hospital for one or more days. Total hospital charges per year for SV patients treated in the ED ranged from \$876,472 to \$1,522,815 between 2002 and 2007 and totaled \$7,205,503 for all the six years. Hospital charges for inpatients ranged from \$235,761 to \$712,302 during the same period and totaled \$3,026,929 for all the six years.

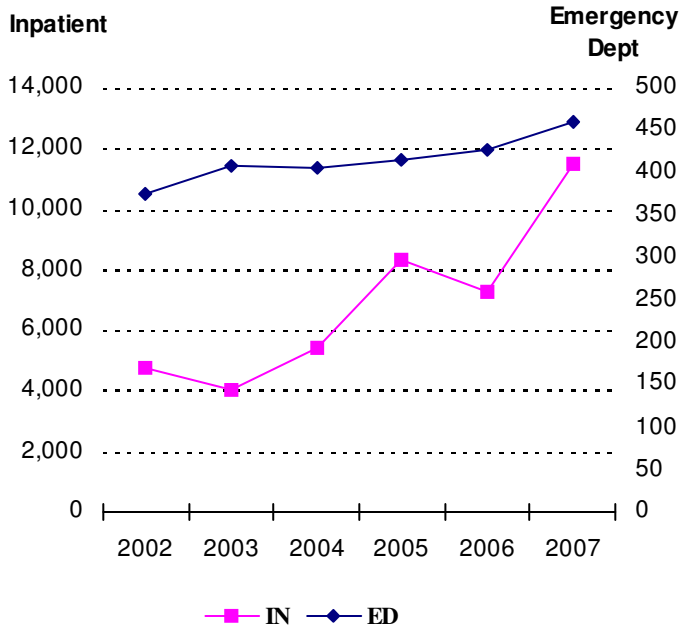
Median charges are most useful for assessment of typical charges because they are not affected by extreme values. The median charge of a hospital patient seen for SV and treated in the ED ranged from \$803 to \$901 between 2002 and 2007. Inpatient median charges ranged from \$6,567 to \$12,997.

Costs. The Pacific Institute for Research & Evaluation in collaboration with MDH calculated the total cost of SV in Minnesota in 2005 and found it to be almost \$8 billion, or \$1,540 per resident (4). Included in the cost were direct costs of victimization such as the cost for medical and mental health care, productivity costs, and reduced quality of life costs that may be applied to an SV patient.

In this Data Brief, medical costs were calculated using costs and charges data from all hospitals reporting medical treatment of a patient following a sexual assault (5). The estimated medical cost of treatment of SV increased substantially between 2002 and 2007 (Figure 3).

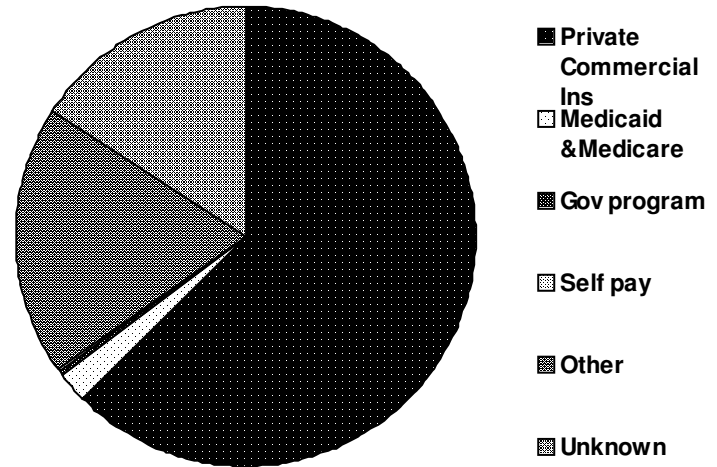
Payers. Most payments for hospital treatment of SV (63%) were made by private commercial health insurance (Figure 4).

**Estimated Cost of Hospital Treatment of SV per Patient (in 2007 USD), Minnesota, 2002-2007**



**Figure 3:** For the six years, the total estimated medical cost due to hospital treatment of SV patients was \$4,778,602. The annual costs of SV treatment per patient were \$415 and \$6,877 for ED and inpatient care respectively. The medical cost of ED treatment ranged from \$422,439 (\$375 per patient) in 2002 to \$684,887 (\$460 per patient) in 2007, an increase of 62% in total ED medical costs and of 23% per unit cost of treatment. Medical cost of inpatient treatment ranged from \$125,213 (\$4,039 per patient) in 2003 to \$332,625 (\$11,470 per patient) in 2007, an increase of 166% in total inpatient medical costs and of 184% per unit cost of treatment. The cost of inpatient treatment was the lowest in 2003 because the least number of patients were admitted in the hospital for one or more days.

**Primary Payer Source for Hospital Treatment of SV, Minnesota, 2002-2007**



**Figure 4:** Most payments for hospital treatment of SV were made by private commercial health insurance (63%). Medicaid and Medicare payments were 2%, government programs 0.4%, self-pay 0.1%, and other sources of payment 19%. The primary source of payment was unknown for 16% of the SV patients.

**Table 1: Hospital-treated and Law Enforcement-reported SV, Minnesota, 2002 – 2007**

|                    | Patients hospital-treated for SV |       |       |       |       |       | 2002 to 2007 Total | *Annualized rate (per 100,000 population)<br><br>Hospital-treated patients | Reported crimes of rape and other sex offenses<br><br>2002 to 2007 Total | *Annualized rate (per 100,000 population)<br><br>Reported crimes |
|--------------------|----------------------------------|-------|-------|-------|-------|-------|--------------------|--|--|--|
|                    | 2002                             | 2003  | 2004  | 2005  | 2006  | 2007  |                    |  |  |  |
| State of Minnesota | 1,169                            | 1,112 | 1,335 | 1,507 | 1,522 | 1,518 | 8,163              | 49.4   | 38,122   | 124.5  |
| Aitkin             | 2                                | 1     | –     | 1     | 4     | 4     | 12                 | 25.3   | 168  | 176.4  |
| Anoka              | 96                               | 70    | 81    | 78    | 107   | 100   | 532                | 53.3   | 2,440  | 127.1  |
| Becker             | 3                                | 2     | 10    | 12    | 13    | 12    | 52                 | 51.1   | 249  | 130.8  |
| Beltrami           | 17                               | 11    | 15    | 15    | 17    | 20    | 95                 | 68.7   | 386  | 150.8  |
| Benton             | 28                               | 32    | 26    | 24    | 27    | 2     | 139                | 116.7  | 163  | 71.3   |
| Big Stone          | –                                | –     | 7     | –     | 1     | 1     | 9                  | 47.0   | 33   | 99.1   |
| Blue Earth         | –                                | 1     | 1     | 1     | –     | 3     | 6                  | 3.4  | 624  | 179.5  |
| Brown              | 1                                | 4     | 2     | 5     | 6     | 2     | 20                 | 25.0   | 87   | 54.7   |
| Carlton            | 8                                | 7     | 8     | 10    | 4     | 1     | 38                 | 32.4   | 294  | 146.4  |
| Carver             | 2                                | 18    | 15    | 10    | 14    | 16    | 75                 | 27.9   | 395  | 79.5   |
| Cass               | 6                                | 3     | 4     | 5     | 8     | 9     | 35                 | 40.8   | 390  | 228.3  |
| Chippewa           | –                                | 4     | 4     | 4     | 4     | 5     | 21                 | 51.7   | 51   | 66.8   |
| Chisago            | 10                               | 7     | 13    | 9     | 22    | 10    | 71                 | 45.1   | 276  | 96.3   |
| Clay               | 2                                | –     | 2     | 3     | 1     | 2     | 10                 | 6.0  | 371  | 116.3  |
| Clearwater         | 3                                | 1     | –     | 1     | 1     | 2     | 8                  | 27.9   | 70   | 139.8  |
| Cook               | –                                | –     | –     | –     | 1     | 4     | 5                  | 24.9   | 52   | 163.1  |
| Cottonwood         | –                                | –     | –     | 1     | –     | 1     | 2                  | 5.6  | 85   | 120.1  |
| Crow Wing          | 22                               | 22    | 23    | 23    | 16    | 14    | 120                | 61.9   | 627  | 175.6  |
| Dakota             | 72                               | 69    | 56    | 66    | 42    | 48    | 353                | 29.1   | 2,316  | 101.5  |
| Dodge              | 1                                | 6     | 3     | 5     | –     | 2     | 17                 | 25.8   | 94   | 81.3   |
| Douglas            | 1                                | 5     | 2     | 2     | 8     | 3     | 21                 | 19.0   | 214  | 102.7  |
| Faribault          | –                                | 1     | 2     | 1     | 1     | 1     | 6                  | 12.9   | 101  | 108.7  |
| Fillmore           | –                                | 3     | 1     | 5     | 1     | 5     | 15                 | 20.3   | 52   | 40.7   |
| Freeborn           | –                                | –     | –     | 1     | 10    | 6     | 17                 | 18.8   | 114  | 59.9   |
| Goodhue            | 11                               | 11    | 9     | 14    | 4     | 7     | 56                 | 38.7   | 293  | 107.5  |
| Grant              | –                                | 2     | 2     | –     | –     | –     | 4                  | 10.5   | 31   | 84.6   |
| Hennepin           | 345                              | 323   | 403   | 466   | 487   | 478   | 2,502              | 68.2   | 10,418   | 154.5  |
| Houston            | –                                | –     | –     | –     | 1     | 0     | 1                  | 1.7  | 90   | 75.6   |
| Hubbard            | 6                                | 1     | 1     | 7     | 2     | 3     | 20                 | 33.7   | 217  | 192.9  |
| Isanti             | 6                                | 9     | 7     | 4     | 10    | 11    | 47                 | 41.6   | 224  | 102.0  |
| Itasca             | 2                                | 11    | 13    | 11    | 15    | 12    | 64                 | 47.2   | 412  | 154.6  |
| Jackson            | 1                                | 2     | –     | 2     | 3     | –     | 8                  | 24.0   | 56   | 83.8   |
| Kanabec            | 1                                | –     | 4     | 4     | 7     | 7     | 23                 | 45.8   | 215  | 223.5  |
| Kandiyohi          | 10                               | 7     | 12    | 12    | 7     | 19    | 67                 | 47.5   | 441  | 179.2  |
| Kittson            | –                                | –     | –     | –     | –     | 1     | 1                  | 7.4  | 11   | 38.0   |
| Koochiching        | 3                                | 6     | 3     | 2     | 4     | 6     | 24                 | 55.1   | 173  | 208.8  |
| Lac Qui Parle      | –                                | 1     | 1     | –     | –     | 1     | 3                  | 22.2   | 28   | 61.4   |
| Lake               | 1                                | 1     | –     | 4     | 3     | 3     | 12                 | 39.2   | 38   | 57.4   |
| Lake of woods      | 1                                | 1     | –     | 1     | 1     | –     | 4                  | 30.6   | 19   | 72.2   |
| Le Seur            | 2                                | 7     | 5     | 6     | –     | 4     | 24                 | 27.0   | 74   | 45.1   |
| Lincoln            | –                                | 1     | –     | –     | 2     | –     | 3                  | 16.4   | –  | –  |
| Lyon               | 7                                | 9     | 4     | 12    | 8     | 8     | 48                 | 59.7   | 169  | 113.8  |
| Mahnomen           | –                                | –     | –     | 1     | –     | 8     | 9                  | 24.4   | 36   | 117.3  |
| Marshall           | 1                                | 1     | 2     | 3     | –     | 4     | 11                 | 19.5   | 27   | 45.2   |

|                 |     |    |     |     |     |     |       |      |       |       |
|-----------------|-----|----|-----|-----|-----|-----|-------|------|-------|-------|
| Martin          | 3   | 8  | 7   | 2   | 2   | 2   | 24    | 41.5 | 205   | 162.9 |
| McLeod          | 2   | 3  | 3   | 9   | 8   | 6   | 31    | 43.8 | 374   | 171.5 |
| Meeker          | 8   | 4  | 4   | 5   | 3   | 2   | 26    | 34.9 | 185   | 132.8 |
| Mille Lacs      | 13  | 10 | 4   | 7   | 15  | 4   | 53    | 60.3 | 322   | 214.6 |
| Morrison        | 2   | –  | –   | 2   | 4   | 8   | 16    | 16.4 | 306   | 156.0 |
| Mower           | 1   | 1  | 6   | 1   | 2   | 2   | 13    | 10.3 | 505   | 217.5 |
| Murray          | –   | 2  | 2   | 1   | –   | 1   | 6     | 26.1 | 28    | 52.5  |
| Nicollet        | –   | 2  | –   | 1   | 3   | 2   | 8     | 7.5  | 388   | 209.0 |
| Nobles          | 4   | 1  | 4   | 8   | 2   | 1   | 20    | 32.8 | 55    | 44.9  |
| Norman          | –   | –  | –   | 1   | –   | –   | 1     | 4.8  | 33    | 78.4  |
| Olmsted         | –   | 20 | 32  | 47  | 20  | 8   | 127   | 29.5 | 981   | 121.9 |
| Otter tail      | 14  | 5  | 9   | 8   | 12  | 10  | 58    | 31.7 | 469   | 135.0 |
| Pennington      | 1   | 5  | 4   | 4   | 2   | 9   | 25    | 48.3 | 166   | 203.2 |
| Pine            | 8   | 5  | 5   | 12  | 4   | 5   | 39    | 46.8 | 283   | 168.6 |
| Pipestone       | 1   | 1  | –   | 2   | 1   | 1   | 6     | 20.3 | 16    | 27.7  |
| Polk            | 7   | 3  | 4   | 7   | 9   | 9   | 39    | 38.4 | 287   | 154.3 |
| Pope            | –   | 1  | 1   | –   | 1   | 6   | 9     | 26.7 | 45    | 67.0  |
| Ramsey          | 140 | 77 | 196 | 221 | 200 | 243 | 1,077 | 65.0 | 2,199 | 73.2  |
| Red lake        | –   | 2  | –   | 1   | 1   | –   | 4     | 31.4 | 4     | 15.6  |
| Redwood         | 1   | 1  | 1   | –   | 5   | 1   | 9     | 18.9 | 118   | 122.8 |
| Renville        | –   | 2  | –   | 3   | 2   | 7   | 14    | 28.6 | 75    | 75.0  |
| Rice            | 11  | 16 | 14  | 11  | 9   | 15  | 76    | 39.5 | 596   | 164.1 |
| Rock            | 1   | 2  | –   | –   | 1   | –   | 4     | 10.2 | 3     | 5.3   |
| Roseau          | 1   | 4  | 2   | 2   | 3   | 2   | 14    | 29.5 | 145   | 148.7 |
| Saint Louis     | 85  | 83 | 84  | 80  | 85  | 96  | 513   | 81.3 | 2,232 | 187.9 |
| Scott           | 18  | 25 | 16  | 23  | 12  | 43  | 137   | 37.3 | 618   | 88.5  |
| Sherburne       | 17  | 16 | 16  | 15  | 16  | 21  | 101   | 42.7 | 378   | 79.6  |
| Sibley          | –   | –  | 1   | –   | 1   | 5   | 7     | 15.7 | 4     | 4.4   |
| Stearns         | 24  | 14 | 19  | 22  | 18  | 7   | 104   | 23.9 | 1,402 | 165.5 |
| Steele          | 9   | 7  | 11  | 14  | 7   | 11  | 59    | 52.2 | 269   | 127.0 |
| Stevens         | –   | –  | 1   | –   | –   | –   | 1     | 30.4 | 66    | 111.9 |
| Swift           | 1   | –  | 1   | 1   | 1   | 8   | 12    | 13.4 | 60    | 88.2  |
| Todd            | 2   | 6  | 2   | 5   | 15  | 1   | 31    | 35.8 | 232   | 158.3 |
| Traverse        | –   | –  | –   | –   | 1   | –   | 1     | 8.6  | 18    | 78.4  |
| Wabasha         | 1   | 1  | –   | 3   | 5   | 3   | 13    | 19.6 | 68    | 51.2  |
| Wadena          | 1   | –  | 2   | 1   | 1   | 1   | 6     | 12.2 | 147   | 181.2 |
| Waseca          | 2   | 3  | 3   | 1   | 3   | 3   | 15    | 25.2 | 147   | 126.2 |
| Washington      | 52  | 43 | 47  | 58  | 60  | 63  | 323   | 44.9 | 1,156 | 88.1  |
| Watowan         | –   | 1  | 2   | –   | 2   | 1   | 6     | 17.4 | 73    | 107.9 |
| Wilkin          | 2   | –  | 4   | 1   | 1   | –   | 8     | 43.7 | 61    | 150.1 |
| Winona          | 15  | 19 | 16  | 15  | 15  | 19  | 99    | 59.4 | 399   | 134.6 |
| Wright          | 13  | 23 | 18  | 19  | 28  | 32  | 133   | 38.4 | 364   | 56.0  |
| Yellow medicine | –   | –  | 1   | 2   | 1   | 1   | 5     | 16.0 | 13    | 20.6  |
| Unknown County  | 38  | 36 | 52  | 61  | 79  | 14  | 280   | NA   | 72    | N/A   |

\*Rates based on average fewer than 20 are considered unreliable.

Notes: Annualized rates are based on females hospital-treated for SV because counts for males treated for SV are statistically insignificant at county level. Annualized rates are not age-adjusted; thus, they vary from the age-adjusted rates mentioned in Sexual Violence Data Brief. County of residence for hospital-treated data is based on a patient's mailing address. Reported crimes represent the county in which a rape or other sexual offense was reported to police. Reported crimes with an unknown county refer to University of Minnesota Police Department data. Reported crimes include rape and other sex offenses (refer to Data Sources and Methodology for definitions). The City of St. Paul is not included in Ramsey county reported crimes of other sex offenses because St. Paul does not release those numbers to the Minnesota Department of Public Safety.

Source: Minnesota Department of Public Safety.

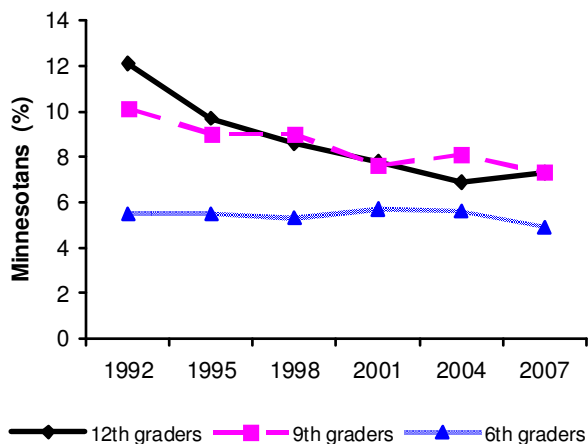
## Self-reported SV in Surveys

### Minnesota Student Survey

Three Minnesota Departments--Human Services, Health, and Education--conduct the Minnesota Student Survey every three years. The survey is voluntary and is completed by three populations of students in public schools. These comprise students in regular public schools, including charter and tribal schools (grades 6, 9, and 12 only), students in alternative schools and Area Learning Centers (all grades), and students in juvenile correctional facilities (all grades) (6).

Since 1992 to 2007, 7.2% of students experienced child SV, defined as 6<sup>th</sup>, 9<sup>th</sup>, and 12<sup>th</sup> grade students who answered yes to at least one of the two SV-related questions (see Data Sources and Methodology section for specific questions asked of students). In 2007, about 9.4% of the females and 3.5% of males experienced SV (Figure 5).

#### Minnesota Student Survey, Self-reported Sexual Abuse by a Family or Non-family Adult, 1992-2007



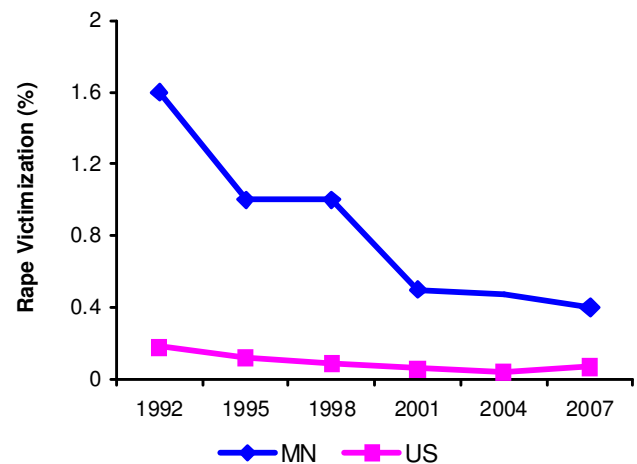
**Figure 5:** Since 1992, when the survey was first conducted, the average proportion of students experiencing SV has been declining (8.9% to 6.0%). The most marked decline was seen among 12<sup>th</sup> graders, who reported a decrease by 5.2%, followed by 9<sup>th</sup> graders who reported a decline by 2.8% and then 6<sup>th</sup> graders who reported a decline by 0.8%. Although 12<sup>th</sup> graders reported the greatest decline, they reported on average the highest rates, 8.7% sexual victimization since 1992.

### Minnesota Crime Survey

The Criminal Justice Statistics Center, previously housed at Minnesota Planning and

now at the Department of Public Safety, has regularly conducted a random statewide mail survey every three years, which includes questions on crime perpetration and victimization. Data from the national crime victims survey and the Minnesota crime survey showed a decline in self-reported SV between 1992 and 2007 (7, 8, 9) (Figure 6). The proportion of Minnesotans reporting sexual harassments has also declined during the five survey years; however, the decline is not statistically significant (Figure 7). As in hospital data and student surveys, the vast majority of those reported experiencing SV were females. Preliminary analysis of 2008 crime survey data shows that in the previous year (2007), at least 83% of those who were raped or experienced other forms of sexual victimization were females. Of survey respondents, 11% reported experiencing SV in their lifetime. Of these, 24% were women.<sup>3</sup>

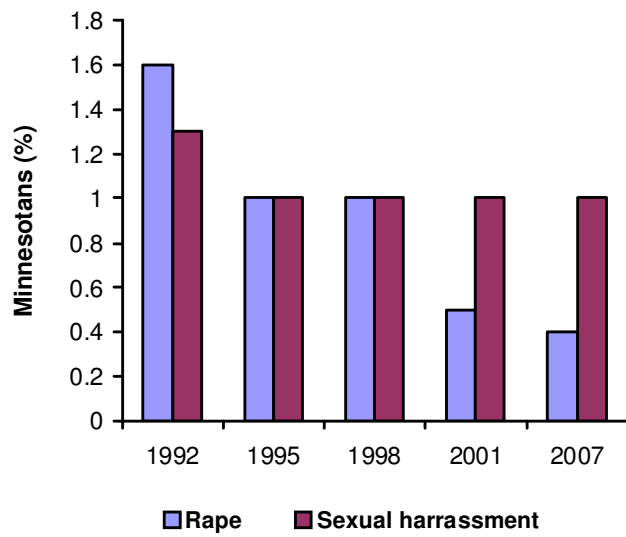
#### Minnesota Crime Survey and National Crime Victims Survey, Self-reported Rape, 1992-2007



**Figure 6:** Self-reported rape/attempted rape victimization in Minnesota is higher than the nation. In Minnesota self-reported rape victimization has declined between 1992 and 2007. National rape victimization fell between 1992 and 2004 and appears to be on the rise between 2005 and 2007.

<sup>3</sup> For further information on 2008 crime survey statistics please contact the Criminal Justice Statistics Center at Minnesota Department of Public Safety.

## Minnesota Crime Victims Survey, Self-reported Rape and Sexual Harassment, 1992-2007



**Figure 7:** Crime survey data shows a decline in proportion of Minnesotans reporting rape/attempted rape and other unwanted sexual activities between 1992 and 2007. The decline in trend of proportions of Minnesotans reporting rape/attempted rape is statistically significant while that of Minnesotans reporting other unwanted sexual activities appear not statistically significant.

### Criminal Justice SV Data

#### Reported crimes

The crime rate for SV-related offenses has remained relatively constant over the past few years, according to data from the Minnesota Department of Public Safety (10). Per 100,000 population, the rate was 127 in 2002, 125 in 2003, 126 in 2004, 124 in 2005, 127 in 2006, and 123 in 2007. SV-related reports of sexual harassment were more predominant than those of rape, about 72%. On average, 48% of all SV-related offenses reported to the police between 2002 and 2007 resulted in the arrest of the offender. In 2006, the reported crime rate for rape was 50 per 100,000 population—an all time high since 1999. In 2007, Minnesota's rape rate fell to 45 per 100,000 population. For other sex offenses not including rape, the reported crime rate per 100,000 population fell from 82 in 2002 to 77 in 2003 and has since remained somewhat steady. Most SV victims are females (87% to 93% of all victims between 2002 and 2007). Females had victimization rates per 100,000 population that ranged from 80 to 89, in the 6-

year period. Rates for males ranged between 7 to 12 per 100,000 population.

#### Arrests

In general, arrests for SV-related offenses have increased since 2002. More than half of these were for sex offenses other than rape. The rate per 100,000 population ranged from 23.4 to 30.4, between 2002 and 2007. In 2007, the rape arrest rate fell to 13.8 per 100,000 population. The decline in arrests for rape is consistent with the fall in the rate of rapes reported to the police that year. Nearly 97% of offenders arrested for sexual-violence related offenses were males. Of those males, 74 to 82% were adults and 18 to 26% were under age 18. Of females arrested for SV-related offenses, almost three-fourths were adults.

### Resources and Assistance

- The Minnesota Center for Crime Victim Services, <http://www.ojp.state.mn.us/MCCVS/>, 1-800-543-7709.
- Minnesota Indian Women's Sexual Assault Coalition, [www.miwsac.org](http://www.miwsac.org), 1-877-995-4800.
- The Minnesota Coalition Against Sexual Assault, [www.mncasa.org](http://www.mncasa.org), 800-964-8847.
- Minnesota Department of Health Sexual Violence Prevention Program, [www.health.state.mn.us/injury/topic/svp](http://www.health.state.mn.us/injury/topic/svp), 651-201-5484.

#### Additionally:

- Stop it Now! Minnesota <http://www.stopitnow.org/mn> 1-800-PREVENT. Provides information and resources to help adults prevent the sexual abuse of children *before* a child is harmed and *before* an adult, youth, or child acts in a sexually inappropriate way toward a child.
- The Minnesota Chapter of the Association for the Treatment of Sexual Abusers (MnATSA), [www.mnatsa.org](http://www.mnatsa.org), [info@MnATSA.org](mailto:info@MnATSA.org). Advances education, research, and professional intervention regarding sexual abuse issues in the state of Minnesota.

## Data Sources and Methodology

### Data Sources

- 1) Minnesota Hospital Association for hospital-treated SV
- 2) Minnesota Student Surveys and the Minnesota Crime Victim Surveys for self-reported SV
- 3) Uniform Crime Reports for sexual-related offenses reported to Minnesota law enforcement agencies

### Methodology

The Minnesota Hospital Association (MHA) was the primary data source for hospital-treated SV. MHA extracted these data from the Universal Billing dataset. The data include about 95% of all hospital patient discharges in Minnesota. Patients who received hospital care due to SV were defined by specific International Classification of Diseases, Ninth revision, Clinical Modification (ICD-9-CM) codes. ICD-9-CM is the official system of assigning codes to diagnoses and procedures associated with hospital utilization in the United States; the codes help identify specific injuries, illnesses, and procedures associated with a patient.

The ICD codes used to identify patients who received hospital care due to SV were rape (E960.1), observation following alleged rape or seduction (V71.5), adult sexual abuse (995.83), and child sexual abuse (995.53).

Age-adjusted rates were formulated using a weight based on age groupings of the U.S. population as reported by the U.S. Census Bureau (11). Weighting in this manner allows for comparison between states.

Annualized rates by county were formulated using the average of age-adjusted rates for females hospital-treated for SV and the average of crude rates for reports of rape and other sex offenses to law enforcement agencies.

Amounts in 2007 dollars were obtained by multiplying the specific dollar amounts for each year with the corresponding Consumer Price Indices for each of those years.

**Hospital-treated SV** is defined as any completed or attempted sex act in which a victim was forced against his or her will, or was unable to consent, and which includes contact and non-contact sexual abuse.

**Self-reported SV** in this report is defined as 6<sup>th</sup>, 9<sup>th</sup>, and 12<sup>th</sup> grade students who answered YES to at least one of the two questions asked in the Minnesota Student Survey; “Has any older person outside the family touched you sexually against your wishes or forced you to touch them sexually?” and “Has any older/stronger member of your family touched you sexually or had you touch them sexually?” The date rape question, “Have you ever been a victim of date rape?” was not included in the percentage of students who experienced SV because it has been modified

across survey years, possibly affecting student responses. In the 2007 student survey, the date rape question was modified to “Has someone you were going out with ever forced you to have sex or do something sexual when you didn’t want to?” Survey participation was 91% of all public operating school districts in 2007 and ranged from 88% to 92% between 1998 and 2007. Sixth grade students have the highest participation across survey years (76%-81%) and 12<sup>th</sup> grade students the lowest (52%-58%).

Self-reported SV also includes Minnesota residents age 18 years and older who answered YES to two questions asked in the 2008 Minnesota Crime Victim Survey; “In 2007, did anyone force you or attempt to force you into any unwanted sexual activity, not including sexual intercourse, such as touching, grabbing, kissing or fondling or other unwanted sexual acts?” and “In 2007, did anyone force you, or attempt to force you, to have sexual intercourse with them?” The other question addressing SV, “In your lifetime, has anyone ever forced you, or attempted to force you, to have sexual intercourse with them?” is new to the survey and addresses lifetime prevalence. The survey response rate in 2008 was 59%. In 1999 and 2002, survey response rates were 57% and 59% respectively. National self-reported SV is from the National Crime Victimization Survey.

**Criminal justice SV-related offenses** are defined as criminal reports of rape and other sex offenses to law enforcement agencies from victims, witnesses, other sources, or discovered by law enforcement officials during their own operation. Criminal reports included in this report are the resulting number of “offenses actually known to law enforcement agencies” after complaints determined by subsequent investigation to be unfounded are eliminated. Rape reports included completed and attempted rapes and excluded statutory rape and other sex offenses. The Federal Bureau of Investigation defines other sex offenses as “violations of common decency or morals and such acts as adultery, incest, indecent exposure, sodomy, and all attempts to commit these acts.” Reports relate to **events** and arrests relate to **persons**. Medical cost was formulated using the hospital charge data reported for care received due to SV. Cost-to-charge ratio is calculated as a ratio of expenses to total revenue; it is used as a multiplier for charges to develop a proxy for actual cost. A cost-to-charge ratio for each facility reporting a medical examination following a sexual assault was used to convert hospital charge data into a cost estimate.

Urban and rural areas were assigned from a ZIP Code Rural-Urban Commuting Area Codes (RUCA) Approximation. Thirty-three (33) RUCA codes (Version 2) ranging from 1.0 to 10.6 from the 2006 census-tract data were assigned to zip codes that fell under the standard Bureau of Census Urbanized Area and Urban Cluster definitions in combination with work commuting information. The aggregate classification of urban and rural areas used was Categorization C. **Urban:** 1.0, 1.1,

2.0, 2.1, 3.0, 4.1, 5.1, 7.1, 8.1, and 10.1; **Rural:** 4.0, 4.2, 5.0, 5.2, 6.0, 6.1, 7.0, 7.2, 7.3, 7.4, 8.0, 8.2, 8.3, 8.4, 9.0, 9.1, 9.2, 10.0, 10.2, 10.3, 10.4, 10.5, and 10.6.

## References

- (1) World Health Organization, Geneva. 2002. World report on violence and health: Summary. [www.who.int/violence\\_injury\\_prevention/en](http://www.who.int/violence_injury_prevention/en)
- (2) Injury and Violence Prevention Unit, Minnesota Department of Health. 2003. Sexual Violence Data Brief: 1999 to 2001. [www.health.state.mn.us/svp](http://www.health.state.mn.us/svp)
- (3) U.S. Bureau of Labor Statistics. CPI Inflation Calculator. [www.bls.gov](http://www.bls.gov)
- (4) Pacific Institute for Research and Evaluation (PIRE). 2007. Cost of Sexual Violence in Minnesota, July 2007. [www.health.state.mn.us/svp](http://www.health.state.mn.us/svp)
- (5) Health Economic Program, Minnesota Department of Health. Health Care Cost Information System. <http://www.health.state.mn.us/divs/hpsc/hep>
- (6) Minnesota Center for Health Statistics, Minnesota Department of Health. Minnesota Student Survey. [www.health.state.mn.us/divs/chs/mss](http://www.health.state.mn.us/divs/chs/mss)
- (7) The Criminal Justice Statistics Center, Minnesota Planning, Department of Administration. Minnesota Crime Survey. <http://www.mnplan.state.mn.us>
- (8) The Criminal Justice Statistics Center, Office of Justice Programs, Department of Public Safety. <http://www.dps.state.mn.us>
- (9) U.S. Department of Justice, Bureau of Justice Statistics. National Crime Victimization Survey. [www.ojp.usdoj.gov/bjs](http://www.ojp.usdoj.gov/bjs)
- (10) Bureau of Criminal Apprehension, Minnesota Department of Public Safety. Uniform Crime Reports, 2002-2007. [www.bca.state.mn.us](http://www.bca.state.mn.us)
- (11) U.S. Census Bureau. [www.census.gov](http://www.census.gov)

## **Suggested Citation**

Gondwe D, Roesler J, Kinde M. Sexual Violence Data Brief, 2002 to 2007. Saint Paul, MN: Minnesota Department of Health, May 2009.

If you require this document in another format, such a large print, Braille, or cassette tape, call 651.201.5400.

*Sexual Violence Data Brief: 2002 to 2007*, was prepared by Dorothy Gondwe, Jon Roesler, and Mark Kinde of the Injury and Violence Prevention Unit with contributions from Anna Gaichas, Evelyn Anderson, Amy Kenzie, and Patty Wetterling of the same; Peter Rode of the Center for Health Statistics; Stefan Gildemeister of the Health Economics Program at the Minnesota Department of Health; and Danette Buskovich at the Department of Public Safety.

Injury and Violence Prevention  
Minnesota Department of Health  
P.O. Box 64882  
St. Paul, MN 55164-0882  
651.201.5400 (Voice), 651-201-5797 (TDD)  
E-mail Injury and Violence Prevention:  
[injury.prevention@health.state.mn.us](mailto:injury.prevention@health.state.mn.us)  
Minnesota Department of Health Web site:  
[www.health.state.mn.us](http://www.health.state.mn.us)